

POWERNAIL® CO.

1300 Rose Road, Lake Zurich, IL 60047

Phone: 1-800-323-1653

Website: www.powernail.com

Operation and Maintenance Manual

MODEL 101R SURFACE NAILER



WARNING

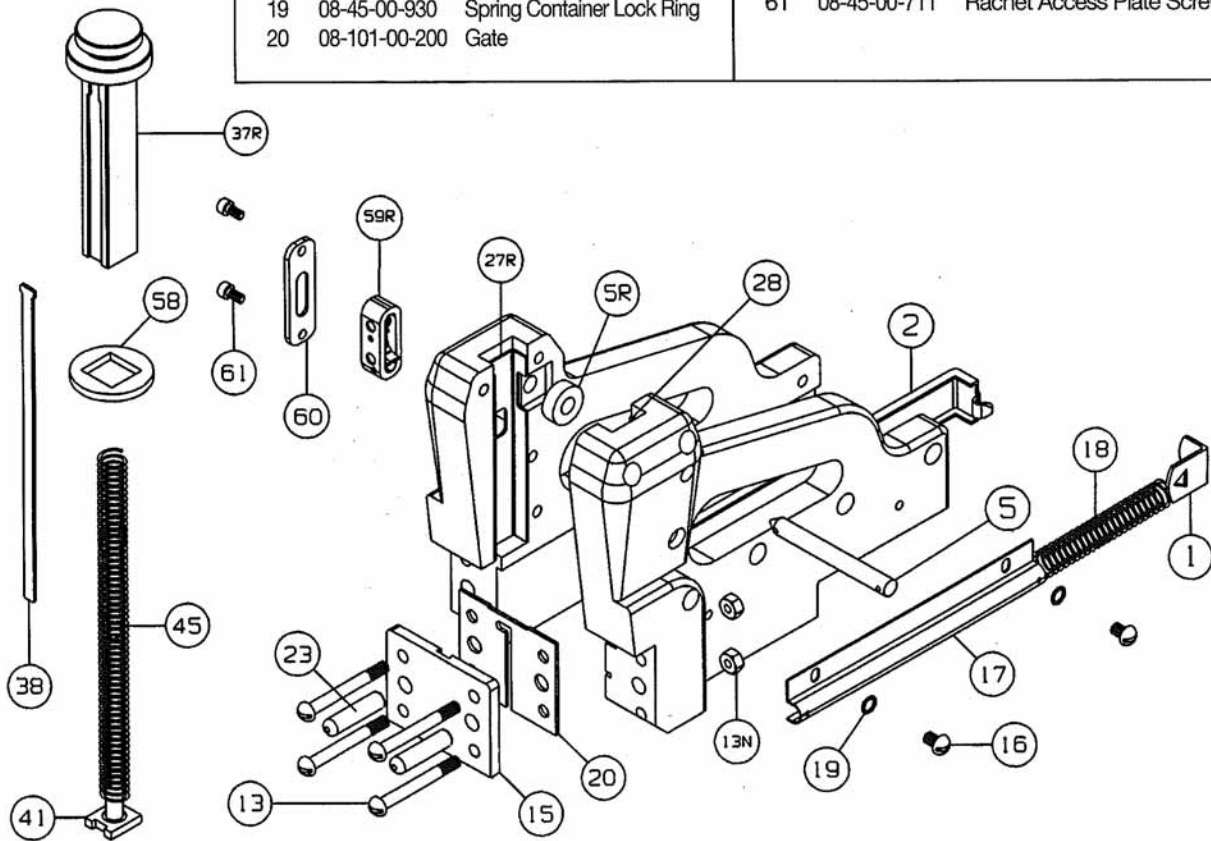
Read this manual before you use this Nailer. Follow all safety warnings and instructions. If you are uncertain about the operation of the Nailer, call us directly at 1-800-323-1653 for assistance or contact the closest Powernail Dealer for help. Please retain this information for future reference.

REV 7.08

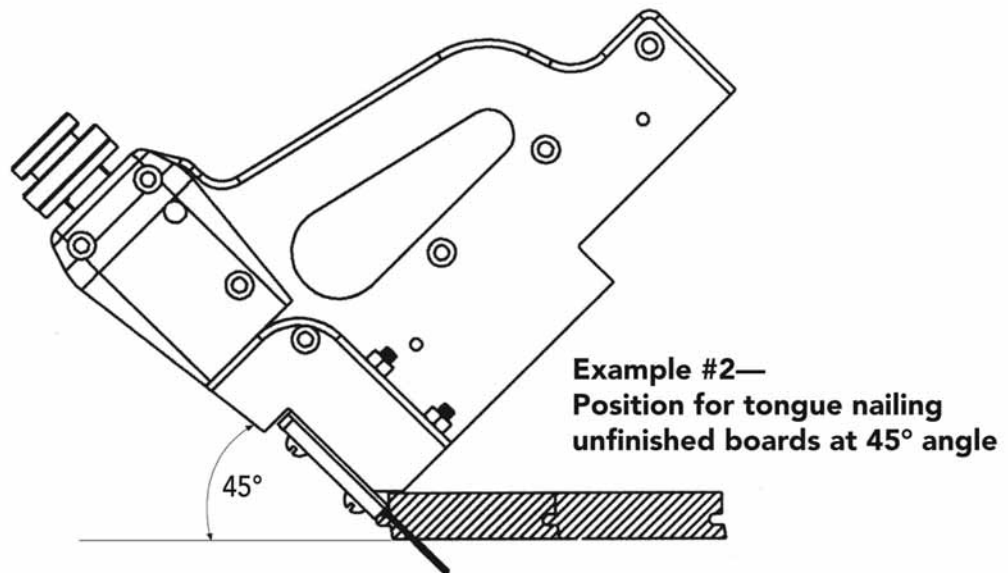
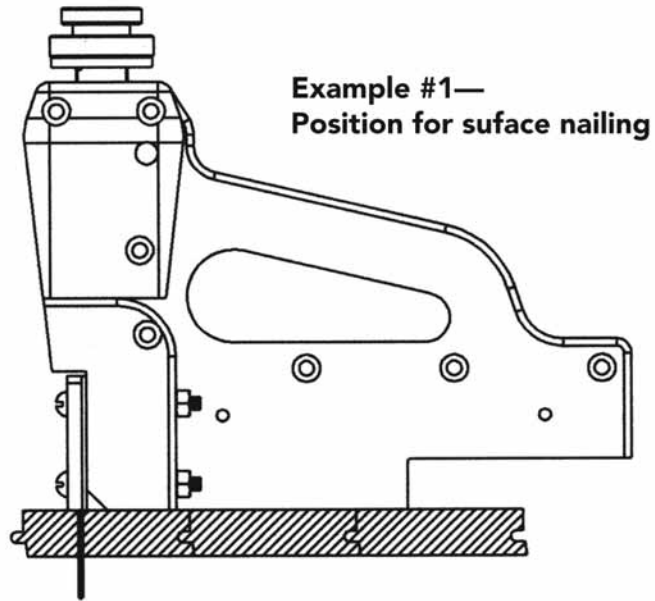
MODEL 101R EXPLODED VIEW

PARTS LIST

ITEM	PART NO.	DESCRIPTION	ITEM	PART NO.	DESCRIPTION
1	08-45-00-010	Spring Clip	23	08-45-00-230	Dowel Pin
2	08-45-00-020	Feeder Channel	28	08-101-00-280	Plunger Liner Left
5	08-45-00-050	Roller Pin Assembly	27R	08-101-00-705	Plunger liner Right
5R	08-45-00-05R	Roller	37R	07-45-00-704	Plunger
13	08-45-00-130	Foot Screw	38	08-101-00-380	Driving Blade
13N	08-45-00-13N	Locknut	41	08-45-00-410	Plunger Spring Pin
15	08-101-00-150	Foot	45	08-45-00-450	Plunger Spring
16	08-45-00-960	Spring Container Screw	58	08-45-00-580	Blade Retainer
17	08-45-00-170	Spring Container	59R	08-45R-00-59	Ratchet Assembly
18	08-45-00-180	Feeder Spring	60	08-45-00-710	Ratchet Access Plate
19	08-45-00-930	Spring Container Lock Ring	61	08-45-00-711	Ratchet Access Plate Screw
20	08-101-00-200	Gate			



MODEL 101R NAILING EXAMPLES



REPLACING #38 DRIVING BLADE

1. Remove #5 Roller Pin—save Cotter Pin.
2. Holding Nailer in left hand with Nailer tilted so rear of Nailer is down, depress #37R Plunger Head slightly so #5R Roller is released from Plunger Head.
3. Remove #37R Plunger Head from Body of Nailer by lifting straight out of Body.
4. Remove #38 Driving Blade from under #58 Rubber Blade Retainer. Discard Blade.
5. Insert new #38 Driving Blade with face of Blade stamped "Front" facing front of Nailer, under #58 Rubber Blade Retainer until the "T" section at top of Blade fits into milled slot under Plunger Head. Push #58 Rubber Blade Retainer flush to underside of Plunger Head.
6. Holding Nailer in left hand with Nailer so rear of Nailer is down, slowly insert Plunger Head and Driving Blade Assembly into Nailer Body, making certain the #45 Plunger Spring is inserted into hole in Plunger Head.
7. While in this position, reinsert the #5 Roller Pin and Cotter Pin.
8. Installation is complete and Nailer is ready to use.

CAUTION

Using a mallet in the manner shown below will not only break the plunger head, but may also damage the nailer body to the point where factory repairs cannot be made.



WARNING! DO NOT USE METAL ENDS OF A Mallet TO STRIKE POWERNAILER® NAILERS